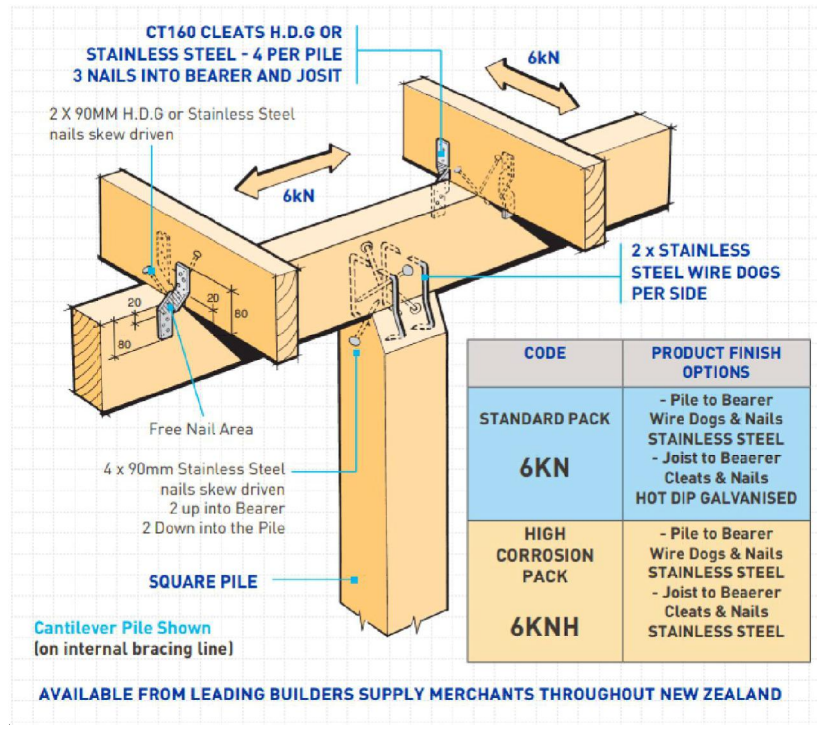
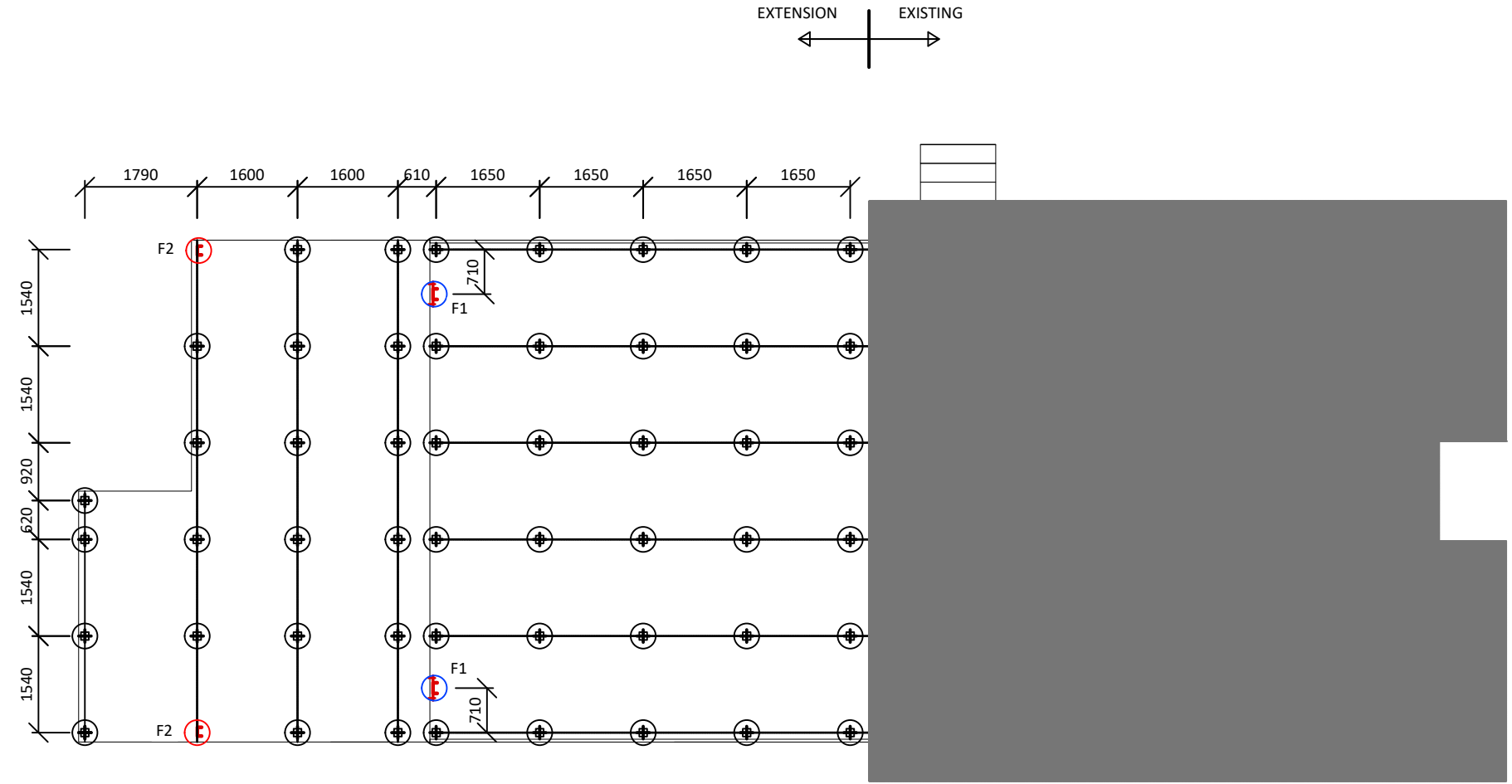


- NOTES:**
1. PROPOSED BEARERS AND JOISTS AS PER ARCHITECT'S SPECIFICATIONS.
 2. ALL PILES WERE CONSIDERED AS CANTILEVER PILES FOR SUBFLOOR BRACING AND ALL PILE FIXINGS TO BE 6kN CONNECTION IN EACH DIRECTION.
 3. TREATED TIMBER PILE CONNECTIONS WITHIN 600mm OF GROUND LEVEL TO BE STAINLESS STEEL.
 4. CONCRETE $f_c' = 25\text{MPa}$

- KEY:**
- - 125mm SQUARE H5, SG8 TIMBER PILE CAST IN 400Ø x 900mm DEEP CONCRETE FOOTING, PROVIDE 100mm BOTTOM COVER TO TIMBER PILE
 - F1 - 450Ø x 2200mm DEEP CONCRETE FOOTING, PROVIDE 100mm BOTTOM COVER TO PORTAL COLUMN
 - F2 - 450Ø x 1700mm DEEP CONCRETE FOOTING, PROVIDE 100mm BOTTOM COVER TO PORTAL COLUMN

- PS4 INSPECTIONS REQUIRED:**
1. PILE/PORTAL HOLES
 2. PILE TO BEARER CONNECTIONS



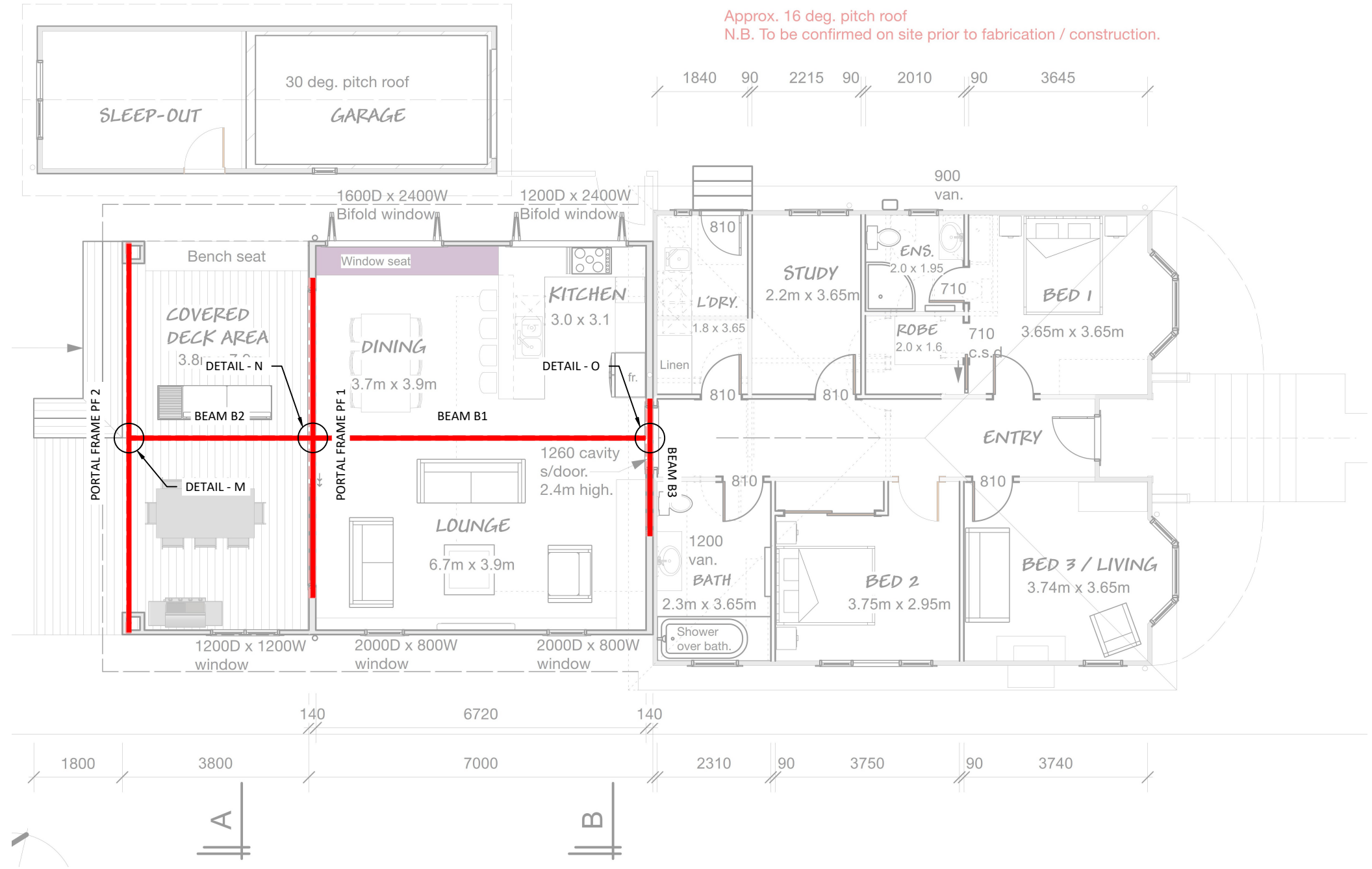
TYPICAL 6KN PILE TO BEARER CONNECTION DETAIL

DESIGNED NP	CHECKED PM
DRAWN NP	APPROVED PM

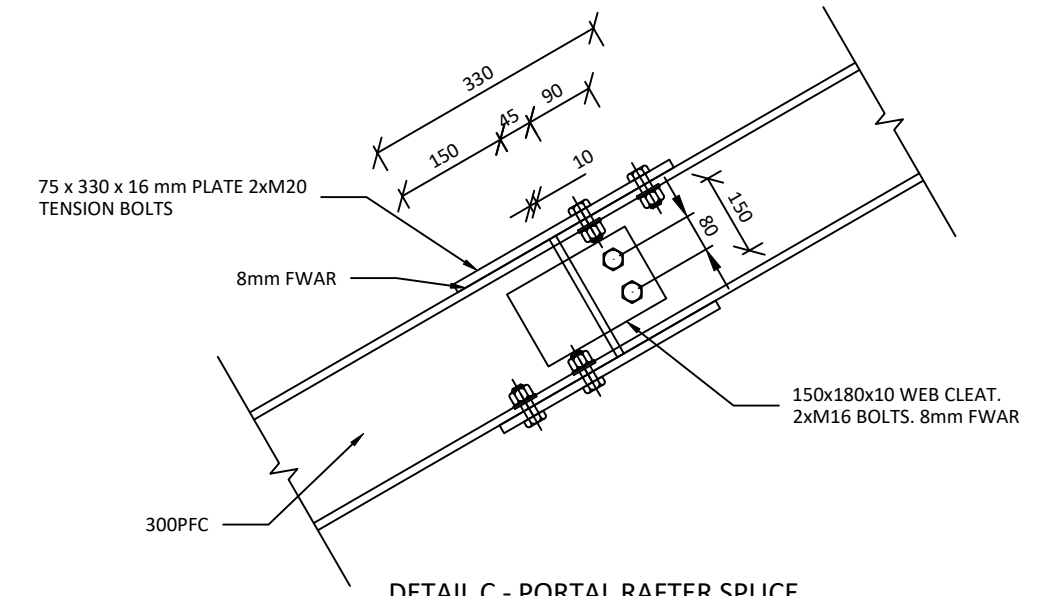
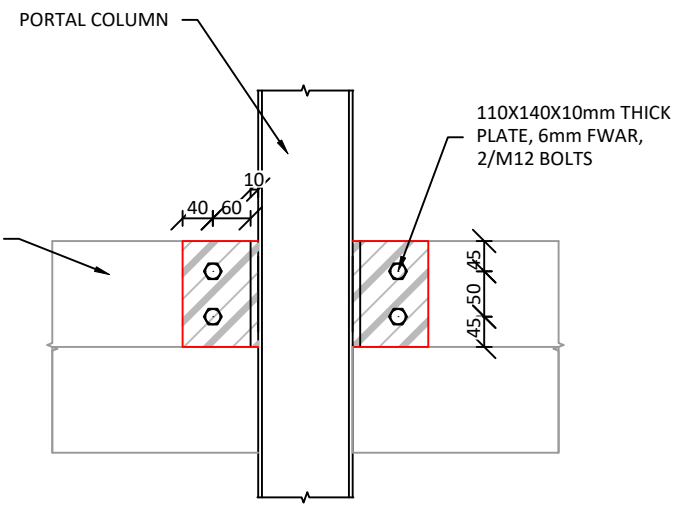
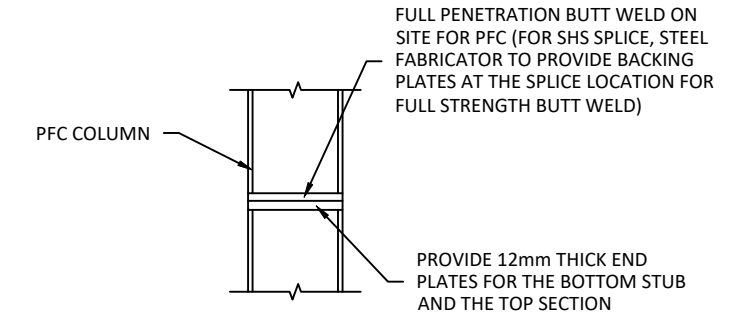
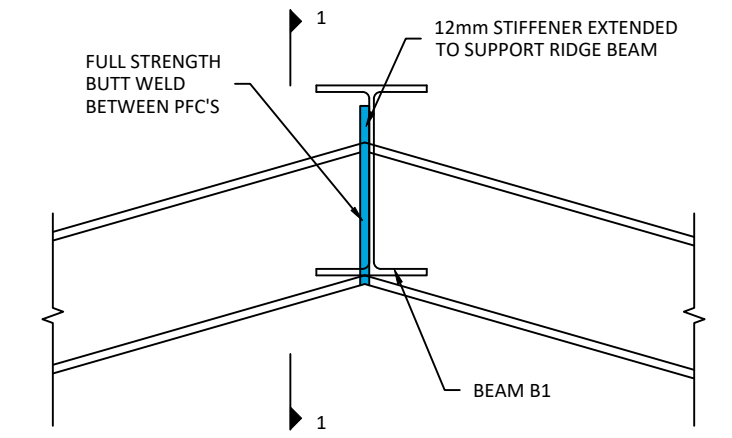
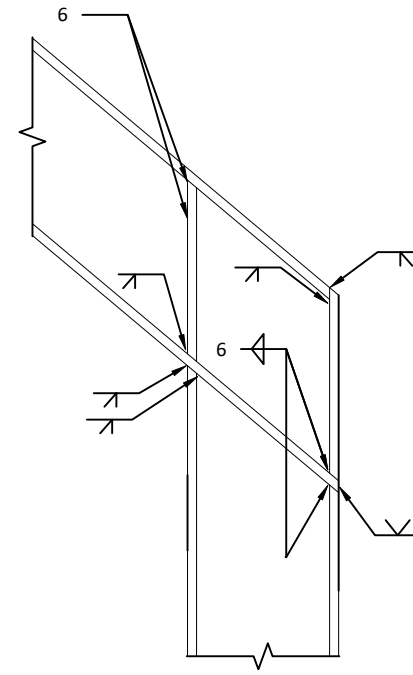
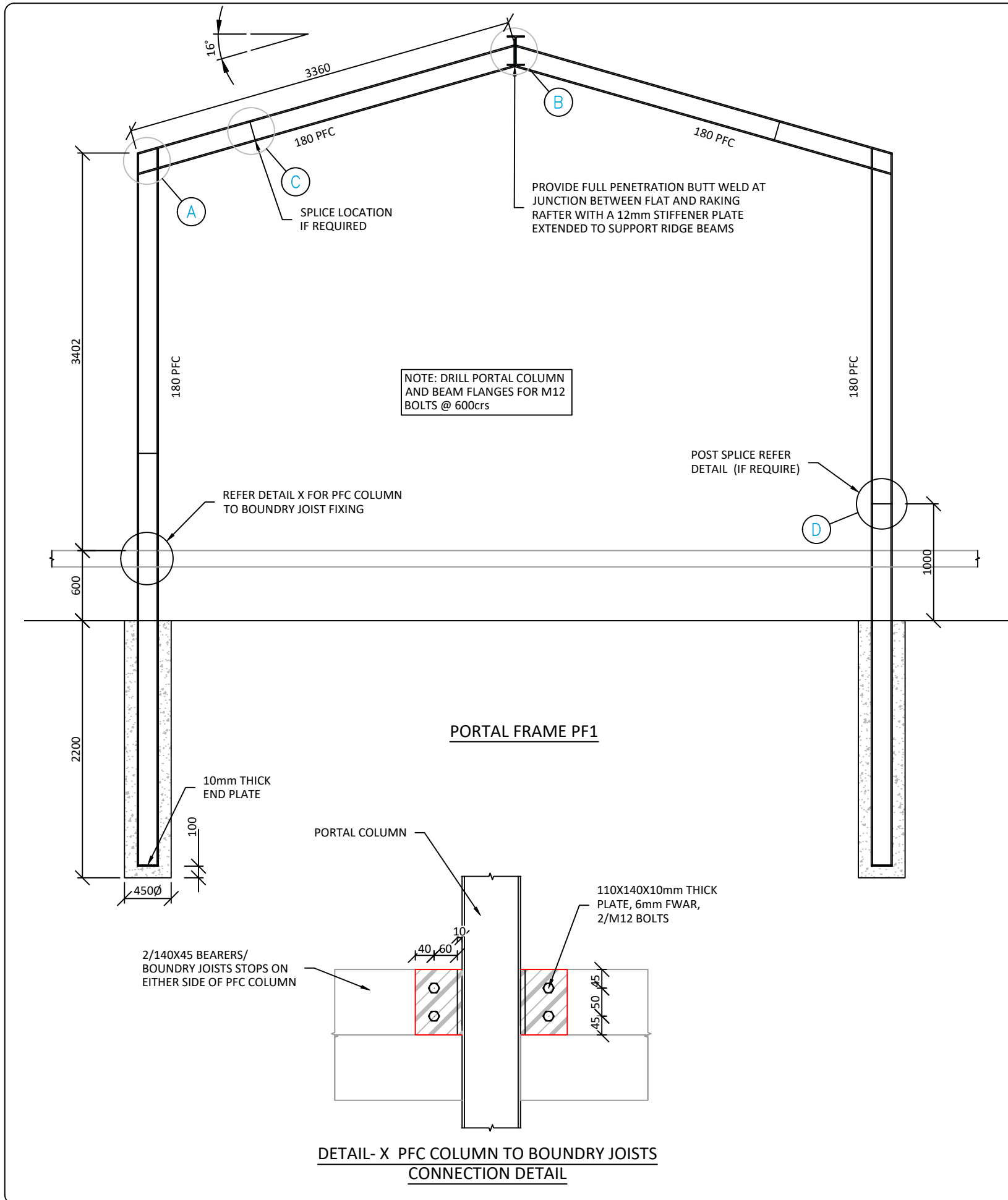
STATUS FOR APPROVAL	
FINAL AS APPROVED BY COUNCIL	
DATE 23/06/2025	SCALE (ORIGINAL SIZE A3) NTS
DRAWING NUMBER 16537 - ST - 01	REVISION A

- STEEL NOTES:**
- CONTRACTOR SHALL CONFIRM ALL DIMENSIONS ON SITE, PRIOR TO SHOP FABRICATION OF NEW STRUCTURAL ITEMS
 - ALL BOLTS TO BE CLASS 8.8/S
 - ALL BOLTS, NUTS AND WASHERS TO BE HOT DIP GALVANISED
 - ALL STEEL SECTIONS AND PLATES SHALL BE GRADE 300, EXCEPT SHS AND RHS SECTIONS WHICH SHALL BE GRADE 350. FABRICATION AND ERECTION OF STRUCTURAL STEELWORK SHALL MEET THE REQUIREMENTS OF NZS 3404.
 - ALL STIFFENER PLATES ARE 10mm THICK, UNLESS SHOWN OTHERWISE.
 - ALL WELDS TO BE 6mm MINIMUM CONTINUOUS FILLET WELDS UNLESS NOTED OTHERWISE, IN ACCORDANCE WITH AS/NZS 1554.
 - ALL HOLLOW SECTIONS TO BE CAP AND SEAL WELDED ALL ROUND.
 - PAINTING OF NEW STEEL WORK (STEEL BEAMS AND PORTAL RAFTER) :
 - ABRASIVE BLAST CLEAN TO AS1627.4, CLASS 2.5 (NEAR WHITE STANDARD)
 - APPLY ONE COAT OF INORGANIC ZINC SILICATE PRIMER TO A MINIMUM DRY FILM THICKNESS OF 75 MICRONS
 - TREAT ANY DAMAGED PAINTING (OCCURRED DURING RE-LOCATION/ERECTION AND SITE WELDING) WITH 2 COATS OF A COLD-GALVANISED PAINT SYSTEM
 - PAINTING OF NEW STEEL WORK (PORTAL COLUMNS & STEEL CLEATS IN SUBFLOOR AREA):
 - ABRASIVE BLAST TO SSPC-SP 10 (AS 1627.4 Sa 2.5) AND ACHIEVE A UNIFORM JAGGED BLAST PROFILE OF BETWEEN 35µm (MINIMUM) AND UP TO 75µm. CLEAN TO REMOVE ALL DUST, GRIT AND DEBRIS.
 - APPLY FULL PRIME OF ALTRA~ZINC 605 TO A MINIMUM DRY FILM THICKNESS OF 75 MICRONS.
 - APPLY FULL COAT OF CARBOGARD 636 XT TO A MINIMUM DRY FILM THICKNESS OF 200 MICRONS.

PORTAL FRAME PF1	180 PFC RAFTER WITH 180 PFC COLUMNS	REFET ST 02 FOR DETAILS
PORTAL FRAME PF2	150 PFC RAFTER WITH 150 PFC COLUMNS	REFET ST 03 FOR DETAILS
BEAM B1	250 UB 31	REFET DETAILS N & O
BEAM B2	PROLAM 240x90 PL12 H3.2	REFET DETAILS M & N
BEAM B3	PROLAM 290x90 PL8 H3.2	PROVIDE MITEK TYPE G CONNECTION

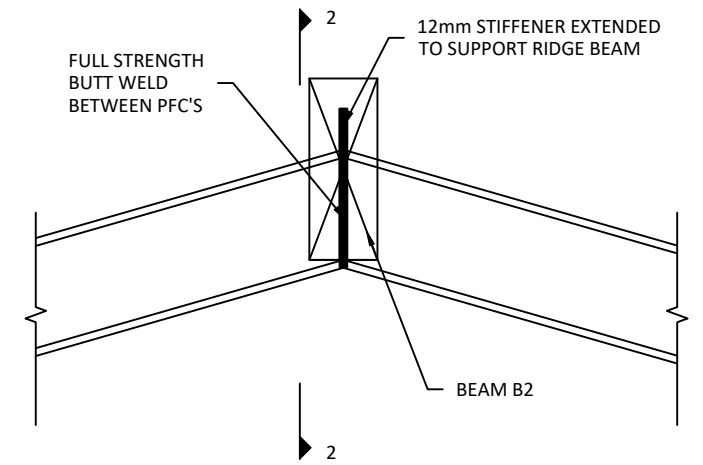
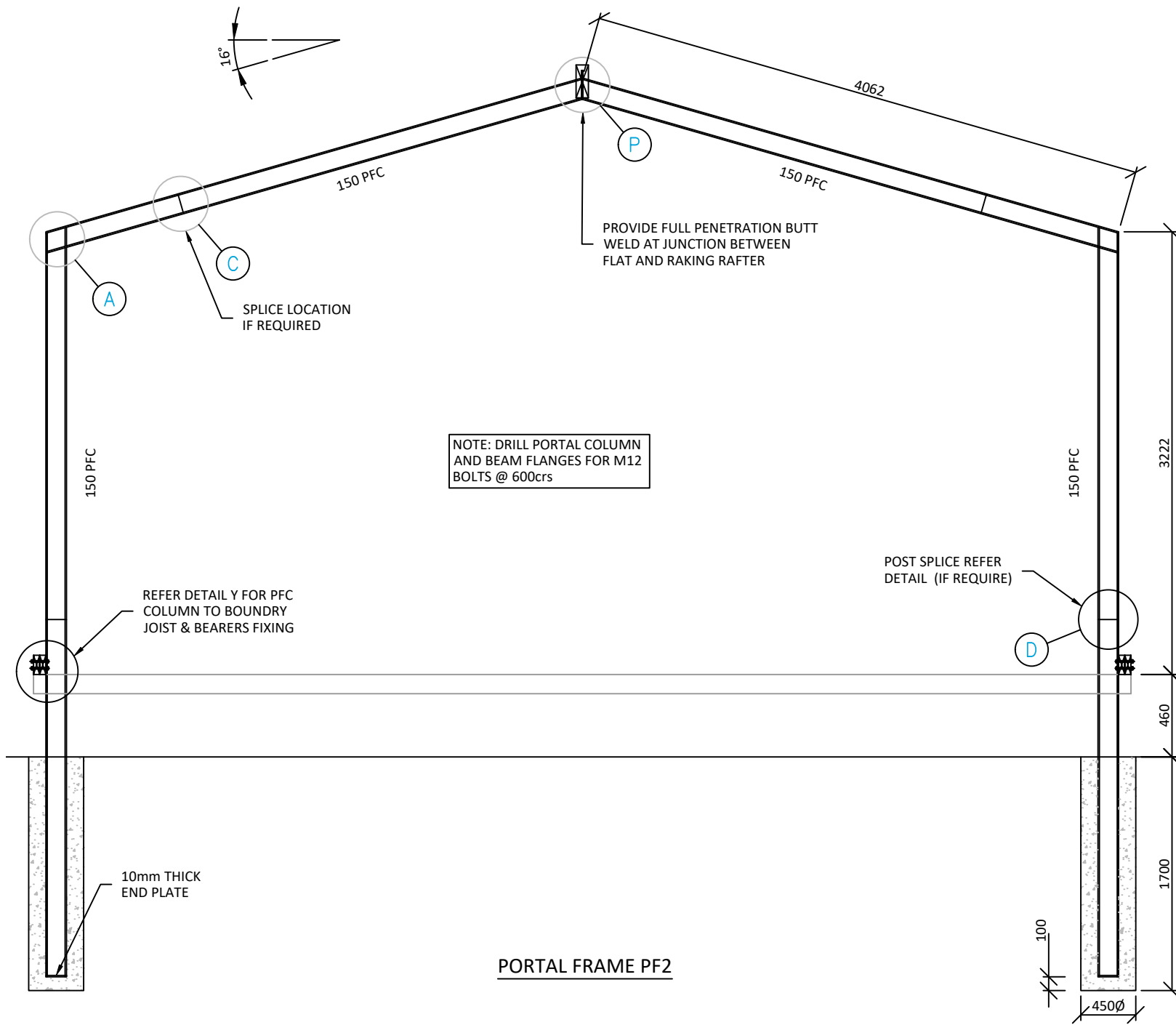


- PS4 INSPECTIONS REQUIRED:**
- STEEL PORTAL AND CONNECTIONS
 - BEAM AND CONNECTIONS

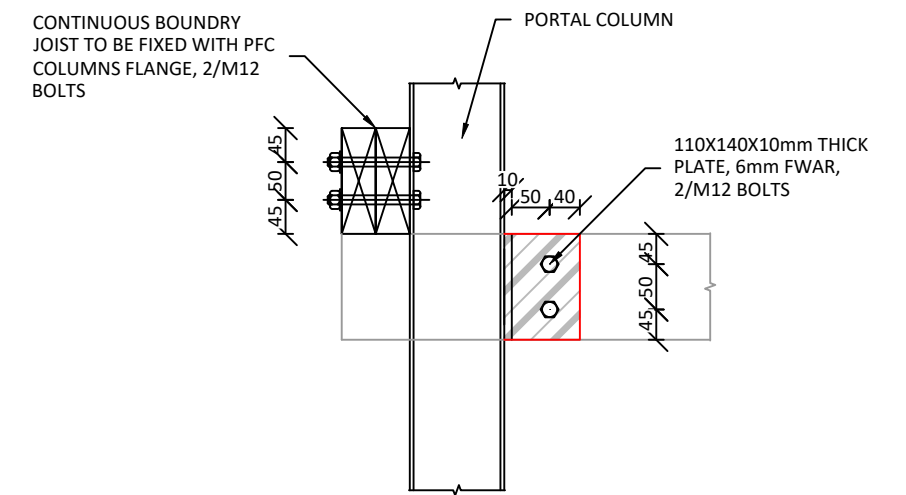


	Level 3, 169 London Street, Hamilton, 3204 07 242 0017 www.tituscivil.co.nz office@tituscivil.co.nz	DESIGNED	CHECKED	CLIENT	PROJECT	DRAWING	STATUS
		NP	PM				
		DRAWN	APPROVED				FINAL AS APPROVED BY COUNCIL
		NP	PM		43 ALBERT STREET HAMILTON		DATE
							01/07/2025
							SCALE (ORIGINAL SIZE A3)
							NTS
							DRAWING NUMBER
							16537 - ST - 03
							REVISION
							B

PRINTED: 2025-07-01 15:47:50
 CAD FILE: G:\Shared drives\16k Housing\16537 - 43 Albert Street - Hamilton, Cameron\Draw\DWG\16537_ST.DWG Set 3.dwg

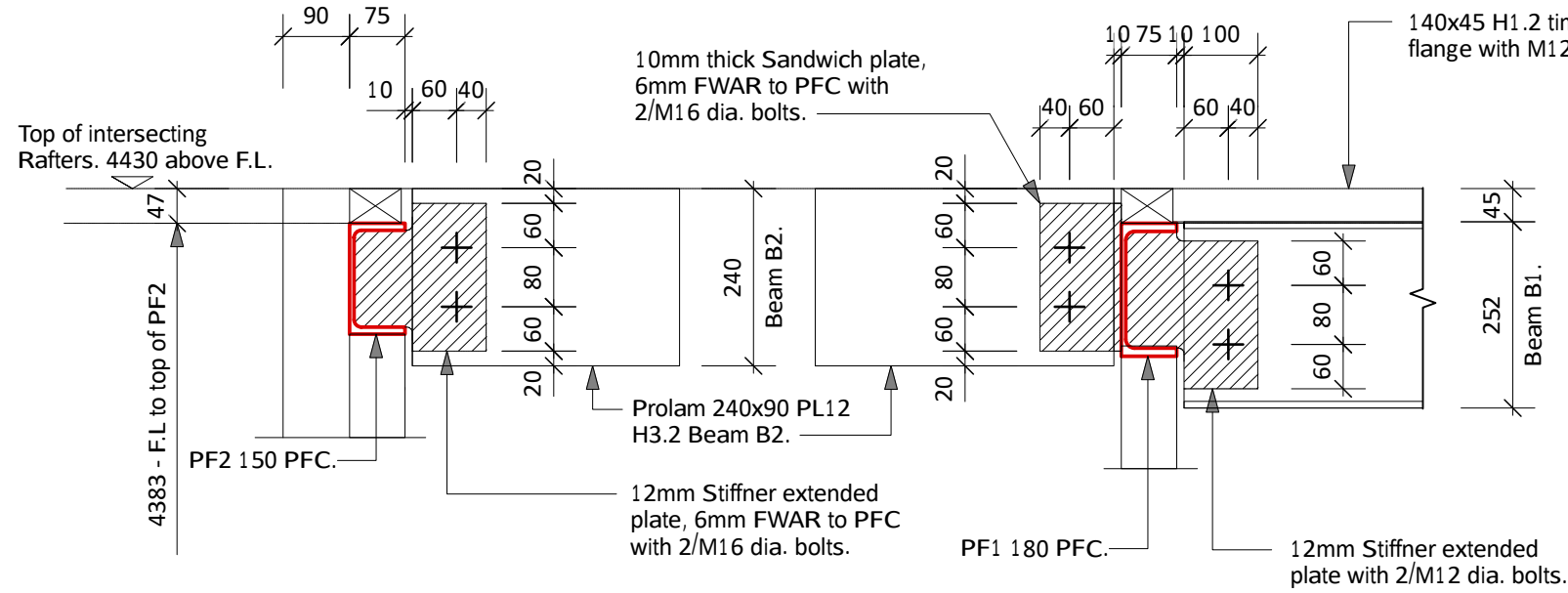


DETAIL - P



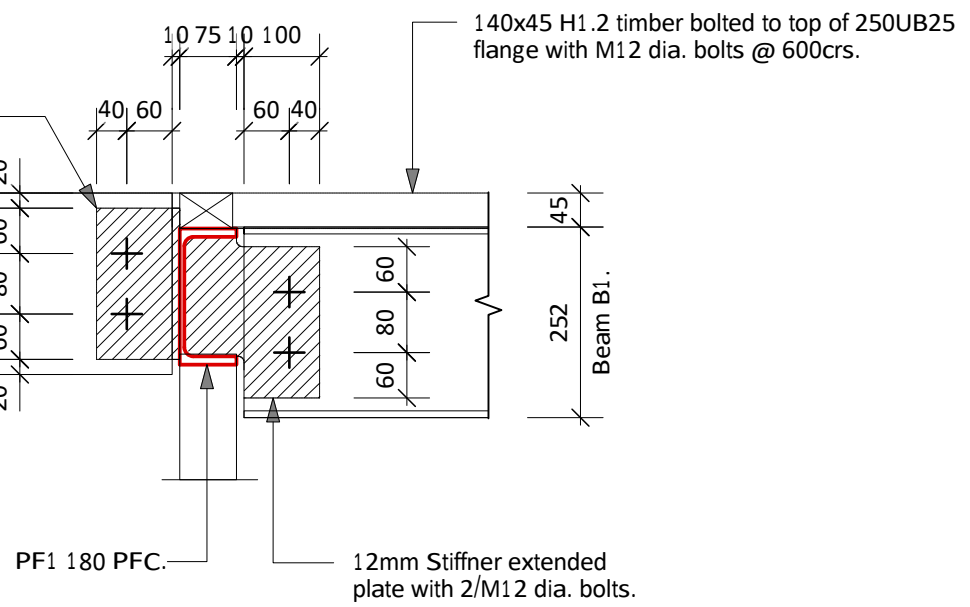
DETAIL-Y PFC COLUMN TO BOUNDRY JOIST & BEARER CONNECTION DETAIL

NOTE:
ALL THE BOLTS, NUTS & WASHERS IN SUBFLOOR SHALL BE STAINLESS STEEL



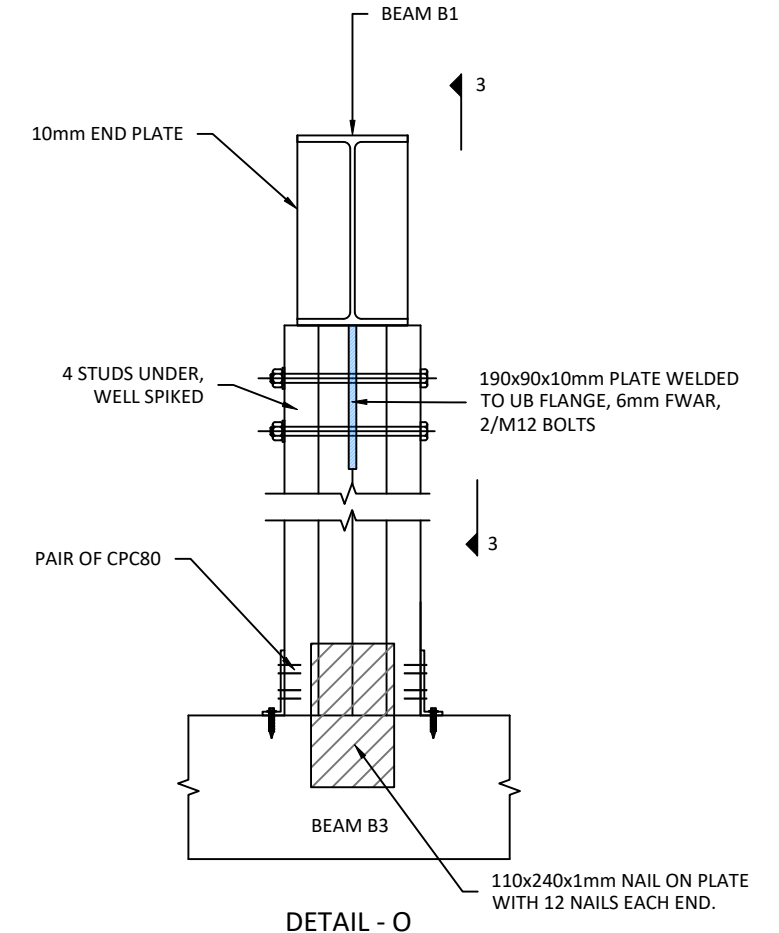
DETAIL - M
SECTION 2 - 2

**PORTAL FRAME 2
RIDGE BEAM DETAIL**

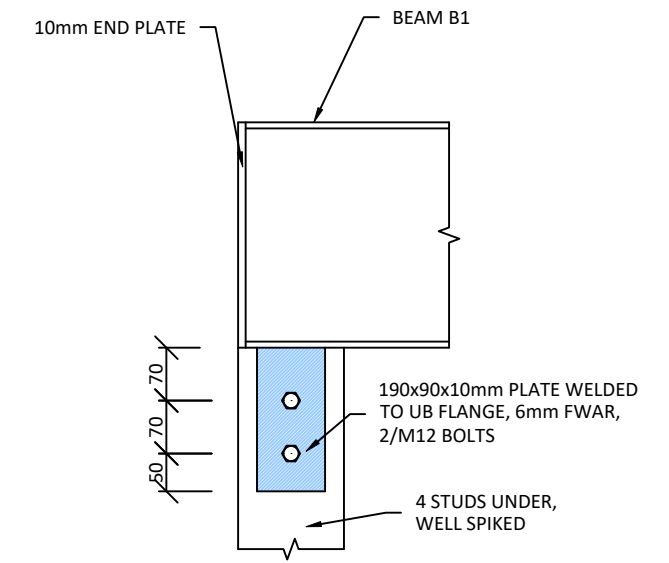


DETAIL - N
SECTION 1 - 1

**PORTAL FRAME 1
RIDGE BEAM DETAIL**



DETAIL - O



SECTION 3 - 3